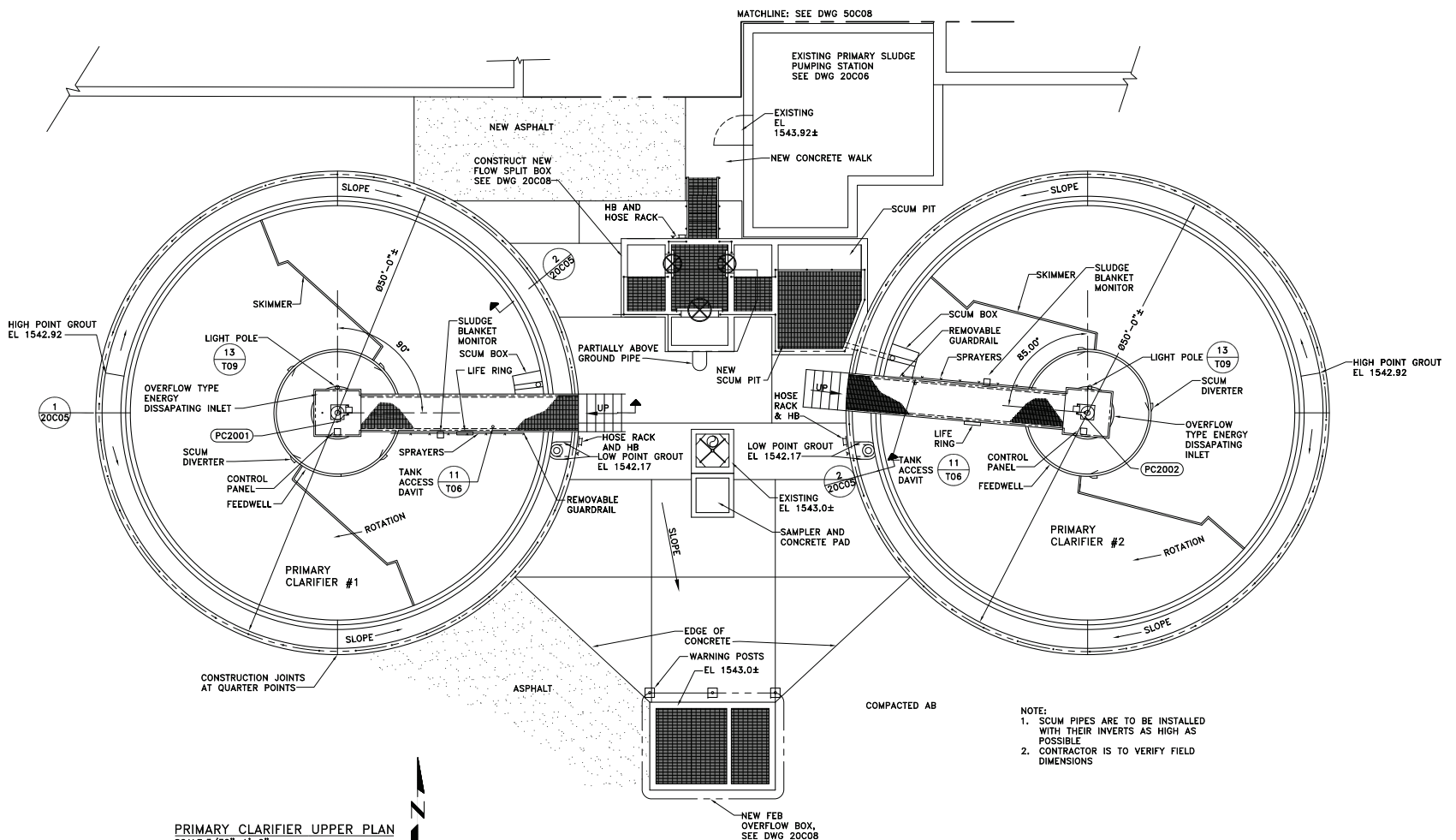




Filename: 243-20003-up_proprietary.dwg Plot Time: Jun 28, 2009 - 12:52pm



PRIMARY CLARIFIER UPPER PLAN
SCALE: 3/32"=1'-0"

- NOTE:
 1. SCUM PIPES ARE TO BE INSTALLED WITH THEIR INVERTS AS HIGH AS POSSIBLE
 2. CONTRACTOR IS TO VERIFY FIELD DIMENSIONS

NOTE: THESE ARE "RECORD DRAWINGS" SHOWN WITH FIELD CORRECTIONS AND CHANGES MADE DURING CONSTRUCTION.

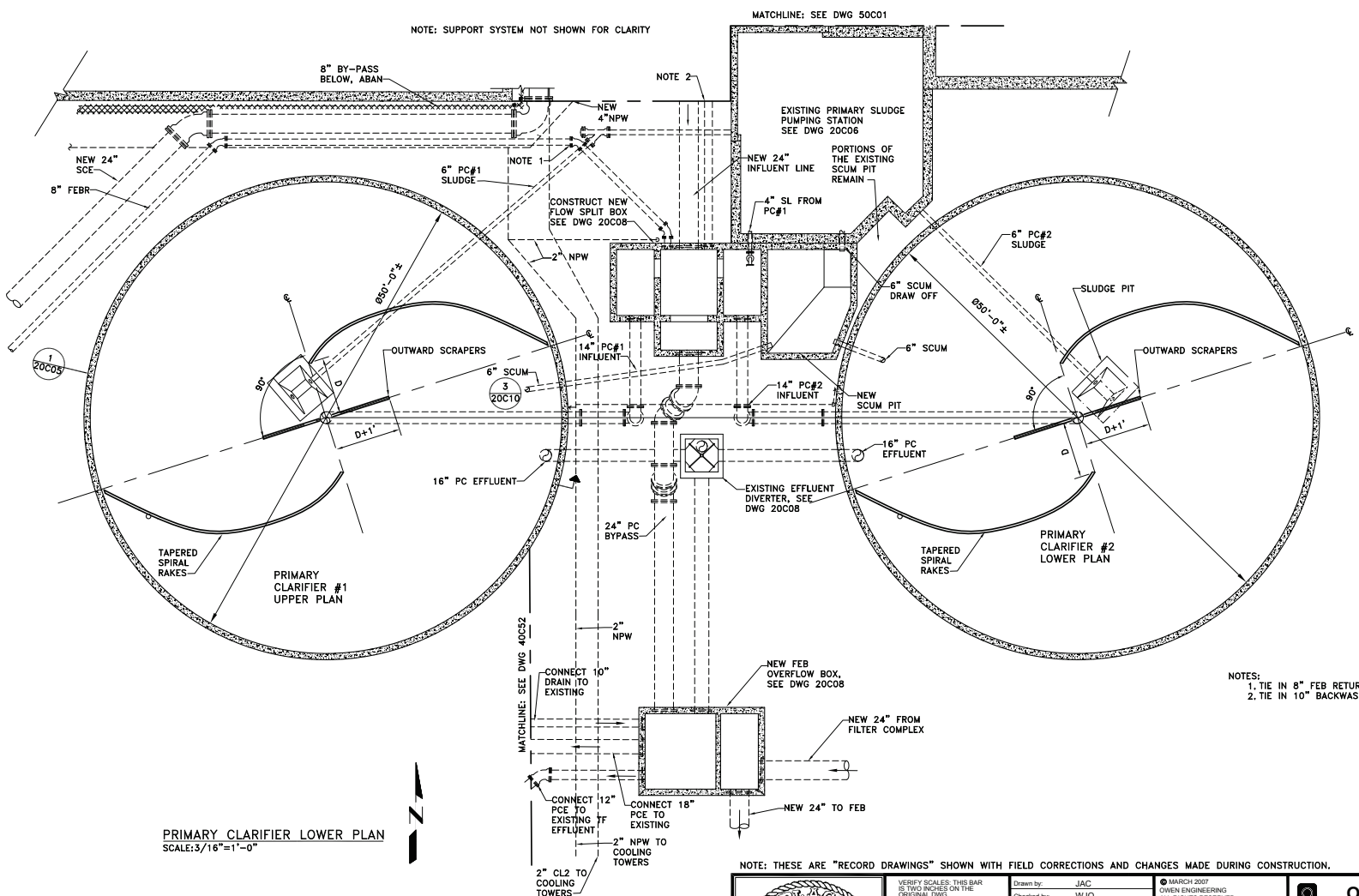
	VERIFY SCALES: THIS BAR IS TWO INCHES ON THE ORIGINAL DWG.	Drawn by: JAC Checked by: WJC Approval date: 11/24/04 Issue for bids: 09/30/05 Issue for const: 03/10/06	© MARCH 2007 OWEN ENGINEERING ALL RIGHTS RESERVED THIS DOCUMENT AND THE IDEAS AND DESIGNS INCORPORATED HEREIN, AS AN INSTRUMENT OF PROFESSIONAL SERVICE, IS THE PROPERTY OF OWEN ENGINEERING AND IS NOT TO BE USED IN WHOLE OR IN PART WITHOUT THE WRITTEN AUTHORIZATION OF OWEN ENGINEERING.	Project No. 02-243 Drawing No. 200003 Sheet No. 48
		REVISIONS 06/30/09 RECORD DRAWINGS		

OWEN ENGINEERING
 & Management Consultants, Inc.

2005 FACILITY IMPROVEMENTS
 HANGTOWN CREEK WATER RECLAMATION FACILITY

PRIMARY CLARIFIER
 UPPER PLAN

Filename: 243-20004-pc-1.dwg Plot Time: Jun 28, 2009 - 12:51pm



PRIMARY CLARIFIER LOWER PLAN
SCALE: 3/16"=1'-0"



- NOTES:
 1. TIE IN 8" FEB RETURN TO SPLITTER BOX.
 2. TIE IN 10" BACKWASH WASTE TO SPLITTER BOX.

NOTE: THESE ARE "RECORD DRAWINGS" SHOWN WITH FIELD CORRECTIONS AND CHANGES MADE DURING CONSTRUCTION.



VERIFY SCALES: THIS BAR IS TWO INCHES ON THE ORIGINAL DWG.

Drawn by:	JAC
Checked by:	WJO
Approval date:	11/24/04
Issue for bids:	09/30/05
Issue for const:	03/10/06
REVISIONS:	
06/30/09	RECORD DRAWINGS

© MARCH 2007 OWEN ENGINEERING ALL RIGHTS RESERVED THIS DOCUMENT AND THE IDEAS AND DESIGNS INCORPORATED HEREIN, AS AN INSTRUMENT OF PROFESSIONAL SERVICE, IS THE PROPERTY OF OWEN ENGINEERING AND IS NOT TO BE USED IN WHOLE OR IN PART WITHOUT THE WRITTEN AUTHORIZATION OF OWEN ENGINEERING.
--

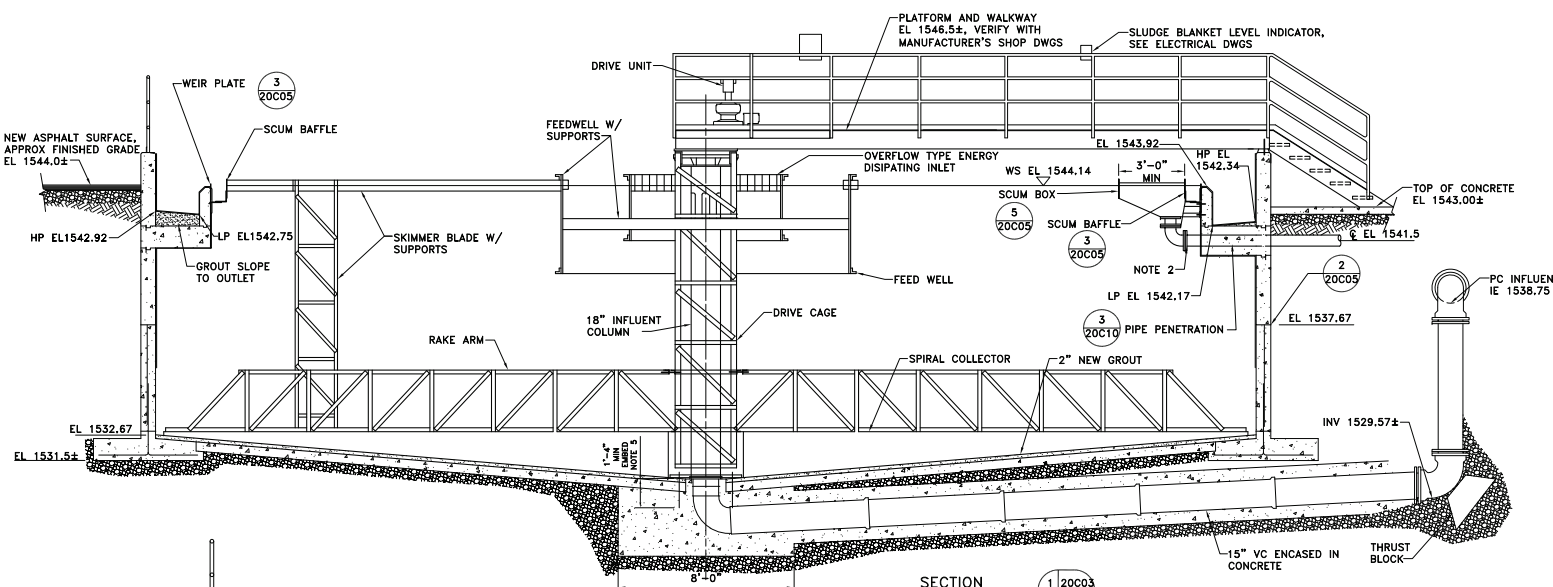
3377 Coach Lane, Suite K Cameron Park, CA 95982	5353 West Dartmouth Avenue, Suite 500 Denver, CO 80227
--	---

OWEN ENGINEERING
& Management Consultants, Inc.

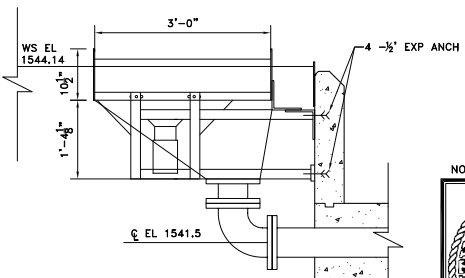
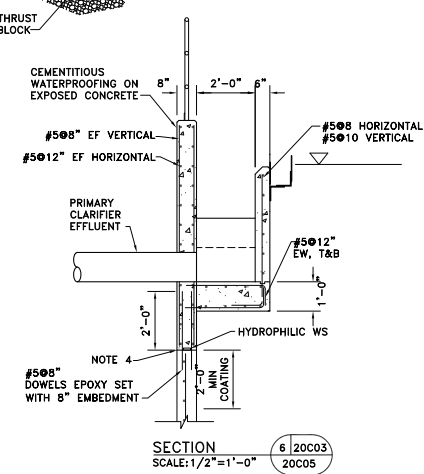
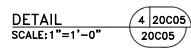
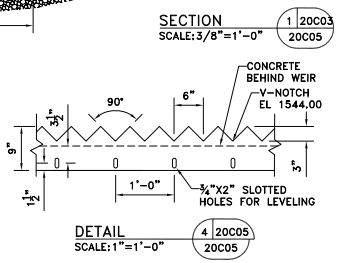
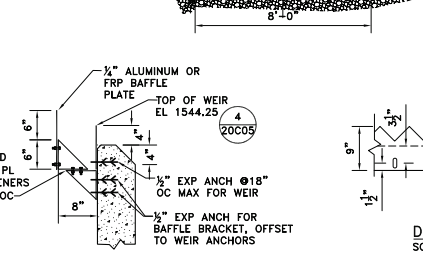
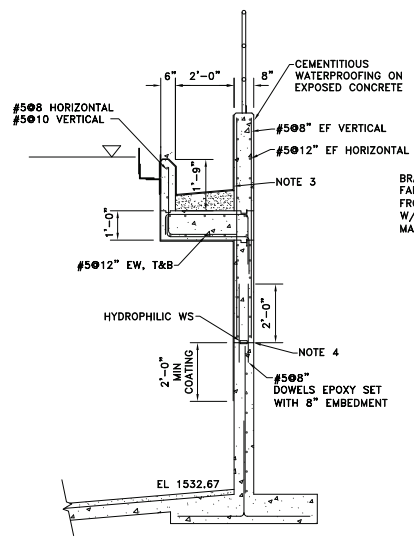
2005 FACILITY IMPROVEMENTS
HANGTOWN CREEK WATER RECLAMATION FACILITY

Project No. **02-243**
Drawing No. **20004**
Sheet No. **49**

Filename: 243-20005-PC-prosec.dwg Plot Time: Jun 28, 2009 12:51pm



- NOTES**
- SOME ITEMS ARE SHOWN OUT OF THE SECTION PLANE FOR CLARITY. SEE PLAN FOR THEIR TRUE ORIENTATION.
 - MAINTAIN ELEVATION THRU CLARIFIER WALL, THEN SLOPE PIPE 1/4" PER FOOT TO SCUM BOX.
 - COAT TROUGH AND WALLS.
 - BUSH HAMMER AND APPLY EPOXY BOND COAT.
 - USE OVERSIZED BASE PLATE TO INSTALL EPOXY SET ANCHORS OUTSIDE OF EXISTING VCP.



SECTION 2
SCALE: 1/2" = 1'-0"
20C05

DETAIL 5
SCALE: 1" = 1'-0"
20C05

NOTE: THESE ARE "RECORD DRAWINGS" SHOWN WITH FIELD CORRECTIONS AND CHANGES MADE DURING CONSTRUCTION.



VERIFY SCALES. THIS BAR IS TWO INCHES ON THE ORIGINAL DWG.	Drawn by: JAC	06/30/09	RECORD DRAWINGS
	Checked by: WJC		
	Approval date: 11/24/04		
	Issue for bids: 09/30/05		
	Issue for const: 03/10/06		
	REVISIONS		

© MARCH 2007
OWEN ENGINEERING
ALL RIGHTS RESERVED
THIS DOCUMENT AND THE IDEAS AND DESIGNS INCORPORATED HEREIN, AS AN INSTRUMENT OF PROFESSIONAL SERVICE, IS THE PROPERTY OF OWEN ENGINEERING AND IS NOT TO BE USED IN WHOLE OR IN PART WITHOUT THE WRITTEN AUTHORIZATION OF OWEN ENGINEERING.

OWEN ENGINEERING & Management Consultants, Inc.		3377 Coach Lane, Suite K Cameron Park, CA 95982	5353 West Dartsouth Avenue, Suite 500 Denver, CO 80227
2005 FACILITY IMPROVEMENTS HANGTOWN CREEK WATER RECLAMATION FACILITY		Project No. 02-243	Drawing No. 20C05
PRIMARY CLARIFIER SECTIONS		Sheet No. 50	